



SKILLS ON POINT

PROGRAM GUIDE

TABLE OF CONTENTS

- TRAVEL TO US 4**
 - SIMULATION CENTER OVERVIEW 4**
 - Acute Care Skills Workshop 5
 - PUBLIC COURSES 5**
 - Comprehensive Suture Training Workshop 6
 - Basic Suture Training Workshop 6
 - Ultrasound Guided IV Insertion Lab 7
 - Women’s Health Lab 7
 - Family Practice Skills Workshop 7
 - Certification Reviews 8
 - Opioid Prescription and Substance Abuse Education Conference 8
 - PRIVATE COURSES 9**
 - Advanced Airway Management 9
 - Central Line Insertion 10
 - Chest Tube Insertion and Thoracentesis 10
 - Cardiac Surgery Simulation 10
 - Introduction to Laparoscopy 11
 - Sexual Harassment Training 11
 - Endoscopic Vein Harvesting 11
- ONLINE CONTINUING EDUCATION 12**
 - ONLINE CE PORTAL OVERVIEW 12**
 - Antibiotic Management Made Easy 13
 - CURRENT COURSE LISTINGS 13**
 - ABG’s and Lab Values Made Easy 13
 - Basic 12-Lead EKG Interpretation 14
 - Anticoagulation Management Made Easy 14
 - Chest and Abdominal X-Ray Interpretation 15
 - Diabetes Management Made Easy 15
 - Fluid Resuscitation and Vasopressors 16

TRAVEL TO YOU21
CONCIERGE PROGRAM OVERVIEW21
PRIMARY CARE22
ACUTE CARE22
NEONATAL CARE23
MAIN ACCREDITATION OVERVIEW24
CONTINUING EDUCATION ACCREDITATION24
FREQUENTLY ASKED QUESTIONS26
CONTRACTING PROCESS FOR CONCIERGE COURSES28
CONCIERGE COURSE LIST29
COURSE SELECTION WORKSHEET30
CONTACT US31



TRAVEL TO US

SIMULATION CENTER OVERVIEW

Designed to offer you a dynamic, modern training environment, our state-of-the-art simulation center blends 2400 square feet of dedicated conference space, breakout space capable of simulating patient exam rooms, operating suites, and whatever you can imagine! Capable of 40+ enrollees, our space is designed with versatility and adaptability in mind, our simulation center pushes the envelope in a modern approach to patient care simulation.

Our simulation center is located at 6775 Fincham Dr. Suite #3, Rockford, IL 61108 and shares space with our business associate AED Essentials, Inc, the Northern Illinois source for American Heart Association courses such as ACLS, PALS, and BLS. There is parking for 40+ participants and level entry, with ADA compliant access and bathrooms. Outside food and drink are allowed and there is a kitchen on site for any needs during the courses.





PUBLIC COURSES

Our public courses are pre-scheduled throughout the year and made available for any interested medical personnel. Courses are held at the Skills On Point Simulation Center in Rockford, IL and around the country at easy to reach destinations. Typical audiences range from physicians, physician assistants, nurse practitioners, nurse anesthetists, registered nurses, chiropractors, nurse aides, medical assistants, emergency medical technicians, respiratory therapists, and students of all above disciplines and more. Courses are accredited based on our likely audience, but if you have an interest in attending and earning particular credit, we can provide detailed information on request.

Fun Fact: 90% of our students are nurse practitioners within 1 year of entry to practice.

ACUTE CARE SKILLS WORKSHOP

Continuing Education Credits: 17.0 Contact Hours (8.0 live, 9.0 online)

Prepare for the acute care environment with a day of hands-on, realistic simulation using industry standard ultrasound-compatible manikins for a variety of commonly performed skills.

INCLUDES:

- Wound prep
- Airway Management
- Fiberoptic Intubation
- Arterial Line Insertion with Ultrasound
- Chest Tube Insertion
- Thoracentesis with Ultrasound
- Central Venous Catheter Insertion with Ultrasound
- Hand Tying for Securing Tubes and Lines
- Antibiotic Management Made Easy (online)
- Heart failure Management Made Easy (online)
- Chest and Abdominal X-Ray Interpretation (online)
- Basic 12 Lead EKG Interpretation (online)



BASIC SUTURE TRAINING WORKSHOP

Continuing Education Credits: 8.0 Contact Hours

Learn wound closure with surgical-grade equipment in a low instructor-student ratio and realistic environment designed to optimize your retention. Includes lifetime access to our video library of techniques performed during the class. A very popular one-day introduction to suturing.

INCLUDES:

- Wound Prep
- Local Anesthesia
- Suture Materials, needles, and Types
- Working with Surgical Instruments
- Interrupted Techniques (Simple, Horizontal Mattress, Vertical Mattress, Simple Buried, Half Buried Horizontal Mattress)
- Running Techniques (Simple, Locking, Subcuticular, Barbed)
- Stapling and Removal
- Punch Biopsy

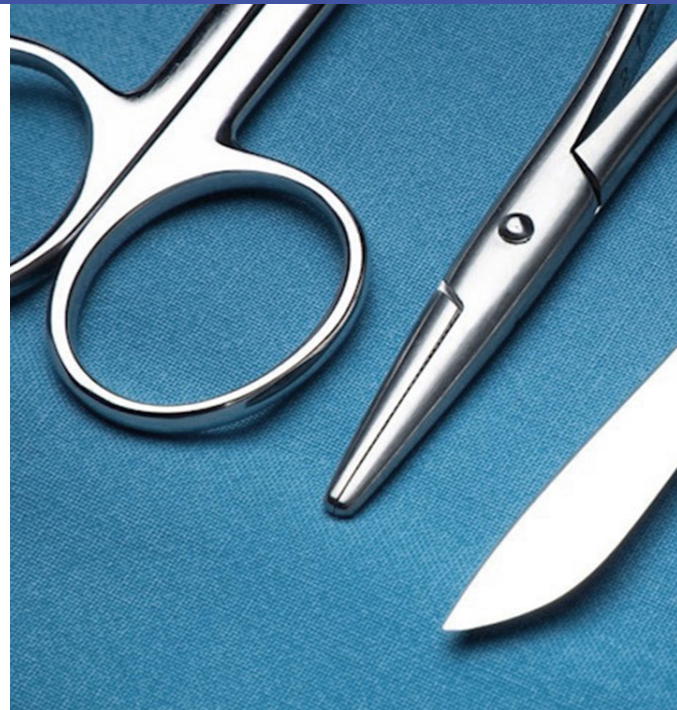
COMPREHENSIVE SUTURE TRAINING WORKSHOP

Continuing Education Credits: 16.0 Contact Hours

Our ideal for learners who will work in either outpatient or inpatient environments. The learner will take their knowledge and skills, whether a novice or expert, to the next level with content typically only provided in first assisting programs. Includes lifetime access to our video library of techniques performed during the class.

INCLUDES:

- | | |
|---|---|
| • Hand Tying | • Stapling and Removal |
| • Wound Prep | • Punch Biopsy |
| • Local Anesthesia | • Abscess Incision and Drainage/Packing |
| • Suture Materials, Needles, and Types | • Chest Tube and Drain Securement |
| • Working with Surgical Instruments | • Purse-String Sutures |
| • Interrupted Techniques (Simple, Horizontal Mattress, Vertical Mattress, Simple Buried, Figure 8, Half Buried Horizontal Mattress) | • Fine Tissue Management |
| • Running Techniques (Simple, Locking, Keith Subcuticular, Buried Subcuticular, Barbed) | • Uneven Tissue Management |
| | • Tissue Under Tension |
| | • Trauma and Pulley Stitches |



FAMILY PRACTICE SKILLS WORKSHOP

Continuing Education Credits: 21.0 Contact Hours (16.0 live, 5.0 online, including 2.0 pharm)

Prepare for the primary care setting with two days of the most common skills and procedures performed in family practice. Can be taken in conjunction with the Women's Health Lab.

INCLUDES:

- Basic Suture Training Workshop
- Advanced Wound Care Management
- Wound Vac Therapy
- Fluorescein Staining and Woods Lamps
- Digital and Ring Blocks
- Local Anesthesia
- Shave, Punch, and Elliptical Excision
- Cryotherapy
- Nail Trephination
- Nail Removal
- Paronychia Release
- Stuck Ring Removal and Ring Cutting
- Abscess Incision and Drainage/Packing
- Antibiotic Management Made Easy (online)
- Basic 12 Lead EKG Interpretation (online)

ULTRASOUND GUIDED IV INSERTION LAB

Continuing Education Credits: 3.0 Contact Hours

Tackle even the most complicated intravenous access with confidence while learning the basics of ultrasound technology. Taught in small groups using Butterfly iQ point-of-care ultrasound probes.

INCLUDES:

- Wound Prep
- Introduction to Vascular Access
- When to Use Ultrasound Guidance
- How to Hold an Ultrasound Probe
- Transverse Axis Views
- Longitudinal Axis Views
- Echogenic Positioning

WOMEN'S HEALTH LAB

Continuing Education Credits: 4.5 Contact Hours (including 1.0 pharm)

Train on real standardized patients who have been trained to teach you techniques for success from the patient perspective. Learners will enjoy a small-class environment with limited enrollment.

INCLUDES:

- Fundamentals of Pelvic Exams
- Common Abnormal Findings and Treatment
- Pap Smears
- Wet Mounts and Microscopy
- Paragard Intrauterine Device Insertion
- Live Pelvic Models and Bimanual Exam



CERTIFICATION REVIEWS

Continuing Education Credits: Contact Hours Vary by Course

Working with expert certification reviewers, Skills On Point has developed an exciting assortment of hard-to-find live advanced certification preparation for multiple medical disciplines. Once recorded, these courses become available on our Online CE Portal for perpetual access.

AVAILABLE COURSES:

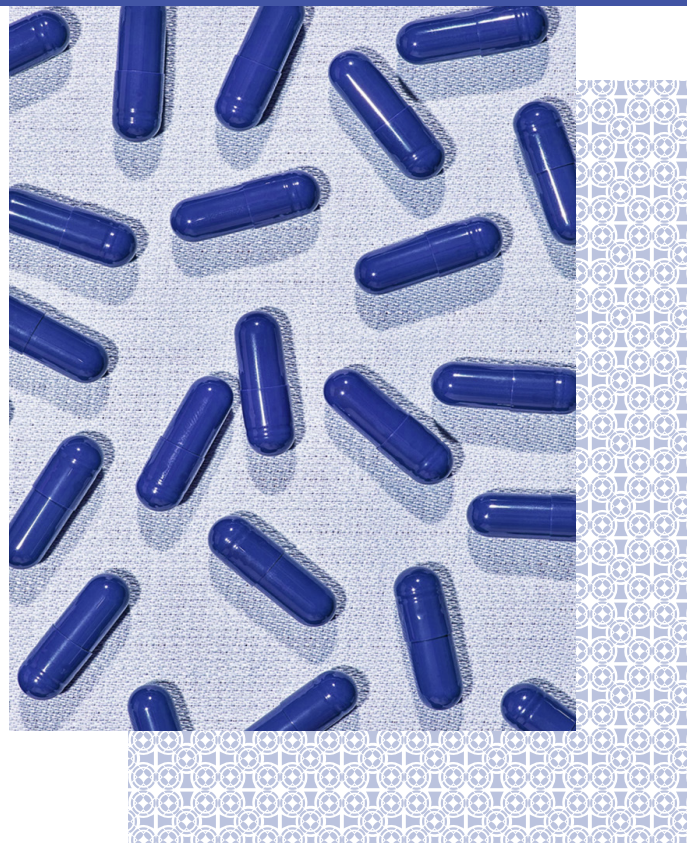
- Certified Neonatal and Pediatric Transport (C-NPT)
- Certified Flight Paramedic and Nurse Transport (CCP-C, FP-C, CTRN, CFRN)
- Certified Emergency Nurse (CEN)
- Critical Care Registered Nurse – (Adult CCRN)
- Critical Care Registered Nurse – (Neonatal CCRN)
- Progressive Care Registered Nurse (PCCN)
- Neonatal Intensive Care Nurse (RNC-NIC)
- Extremely Low Birth Weight (ELBW)

OPIOID PRESCRIPTION AND SUBSTANCE ABUSE EDUCATION CONFERENCE

Continuing Education Credits: 10.0 Contact Hours (including 10.0 pharm hrs)

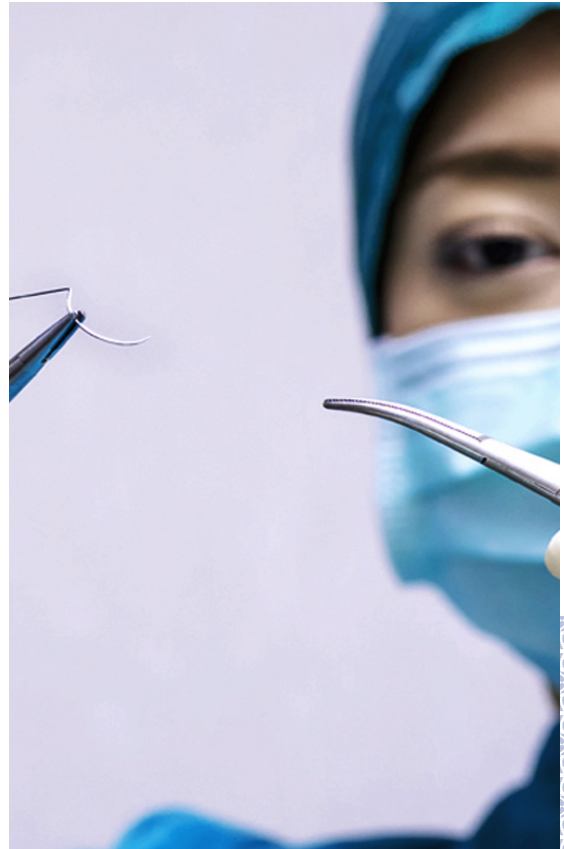
Offered live biennially in April, this course is designed to meet the renewal criteria immediately before Illinois APRN license renewals are due to satisfy required training directives. Includes 6 hours live plus 4 hours pre-recorded online content.

A conference like no other, this includes content from drug enforcement officials, nurse practitioners, pharmacists, police, lawyers, and key stakeholders in the at-risk communities in Illinois.



PRIVATE COURSES

To best accommodate our learners, our private courses are scheduled based on instructor and student availability and frequently, may be merged together with other courses for a good blend of our hard-to-find content. May be taken as a 1:1 instruction or in small group settings.



ADVANCED AIRWAY MANAGEMENT

Continuing Education Credits:3.0 Contact Hours

Start with the most basic airway devices and expand to the most in-depth and prepare for whatever breathing issues come your way. A great hands-on companion to our Mechanical Ventilation course.

COURSE OBJECTIVES:

- Laryngeal Mask Airway
- Blind Insertion Airway Devices
- Tricks for Proper Insertion
- Direct Laryngoscopy
- Endotracheal Intubation
- Video-Assisted Laryngoscopy
- Fiberoptic Intubation
- Retrograde Intubation
- Cricothyroidotomy
- Bronchoscopy





CARDIAC SURGERY SIMULATION

Continuing Education Credits: 3.0 Contact Hours

Take the driver's seat in heart surgery and learn the steps from the perspective of the first assistant. You will leave the course with a hands-on review of what goes into traditional on-pump bypass surgery with our proprietary simulation gear.

INCLUDES:

- Endoscopic Vein Harvest Concepts
- Vein preparation and Clipping
- Sternotomy and Retraction
- Placement of Aortic, Venous and Cardioplegia Canulae
- Arresting the Heart and Sew the Graft in Place
- Epicardial Pacer Wire Insertion
- Mediastinal Chest Tube Insertion
- Closure of the Chest with Wires
- Skin Closure with Subcuticular Stitching
- Post-Procedure Management and Documentation

CENTRAL LINE INSERTION

Continuing Education Credits: 3.0 Contact Hours

Learn central line insertion in the right internal jugular, subclavian, and femoral positions using industry standard of commercial grade ultrasound-compatible manikins.

INCLUDES:

- Field Preparation
- Ultrasound Guided and Landmark Guided Approach
- Local Anesthesia
- Right Internal Jugular Approach
- Right Subclavian Approach
- SCVO2 Catheter Basics for Hemodynamic Monitoring
- Securement
- Post-Procedure Management and Documentation

CHEST TUBE INSERTION AND THORACENTESIS

Continuing Education Credits: 3.0 Contact Hours

Gain confidence using our state-of-the-art chest tube manikin with ultrasound-compatible thoracentesis capabilities. Also shown from the internal point of view giving you a unique understanding of the anatomy.

INCLUDES:

- Field Preparation
- Rib Space Selection and Landmarks
- Local Anesthesia
- Blunt and Trocar Tube Insertion
- Pleur-Evac® Basics
- Ultrasound Guided Thoracentesis
- Post-Procedure Management and Documentation



ENDOSCOPIC VEIN HARVESTING

Continuing Education Credits: 4.0 Contact Hours

Add this lucrative skill to your repertoire in a realistic operative environment with our proprietary saphenous vein simulator using Maquet or Terumo harvesting instrumentation.

INCLUDES:

- Positioning of the Patient
- Basic Anatomy of the Leg
- Landmark-Based Entry
- Ultrasound-Based Entry
- Performing the Harvest
- Removing the Vein
- Closing the Surgical Site
- Preparing the Vein



INTRODUCTION TO LAPAROSCOPY

Continuing Education Credits: 3.0 Contact Hours

It's not as easy as it seems! Here is your chance to view in two dimensions while you work in three dimensions and learn how to best facilitate proper surgical care and assist surgeons with high-quality laparoscopic equipment.

INCLUDES:

- Trocars and Laparoscopic Ports
- Site Selection for Insertion
- Direct and Blind Insertion Considerations
- Laparoscopic Instrument Selection
- Using the Camera Properly
- Horizon and Following Trocar Entry
- Knot Tying and Dexterity Skills

SEXUAL HARASSMENT TRAINING

Continuing Education Credits: 1.0 Contact Hour

Required by Illinois law for all employees annually, this course meets all guidelines set forth by HB75 as a qualified training in sexual harassment. May be presented in live or self-guided online format.

INCLUDES:

- Identification of common examples of sexual harassment
- Remedies available for victims of sexual harassment
- Responsibilities of employers to prevent, investigate, and correct sexual harassment



ONLINE CONTINUING EDUCATION

ONLINE CE PORTAL OVERVIEW

Using the ever-popular platform Teachable.com as the backbone of our portal, we have helped thousands achieve an easy solution for high-quality continuing education and course information management. We have gathered experts in many fields and put them together in one site with lifetime access, continuing education credit, and the tools necessary to make the difficult concepts easy. Check out our listing below of current courses offered. We are constantly adding new content, so to get the most accurate listing and pricing, go to <https://skills-on-point.teachable.com>



CURRENT COURSE LISTINGS

ABG'S AND LAB VALUES MADE EASY

Continuing Education Credits: 3.0 Contact Hours

Taught by Sean G. Smith, BSN, RN, CCRN, CCP an expert lecturer and clinician in prehospital and critical care nursing, this course provides a practical approach to blood gas interpretation and common lab values needed for modern practice.

INCLUDES:

- Constituents of the ABG
- Acid/Base Balance
- Metabolic and Respiratory Acidosis
- Metabolic and Respiratory Alkalosis
- Mechanisms of Compensation
- Complete Blood Count
- Complete Metabolic Panel
- Thyroid Function Testing
- Coagulation Testing
- Urinalysis
- Translation to Clinical Practice

ANTIBIOTIC MANAGEMENT MADE EASY

Continuing Education Credits: 2.0 Contact Hours (including 2.0 pharm hrs)

Conquer all the complicated concepts of antimicrobial therapy made easy by expert clinical pharmacist Tom Maggio, PharmD, BCCCP.

INCLUDES:

- History of Our Modern Antibiotics
- Common Pathogens and Classifications
- Testing Used to Isolate and Evaluate Antibiotic Response
- Interpretation of These Tests
- Different Antibiotic Classes and Examples of Each Class
- What Antibiotic to Choose for Common Indications
- Duration of Therapy for Common Indications
- The Future of Antibiotic Therapy and Resistance Trends



ANTICOAGULATION MANAGEMENT MADE EASY

Continuing Education Credits: 2.0 Contact Hours (including 2.0 pharm hrs)

Take a modern view of all thing's anticoagulation. Taught by two expert clinical pharmacists Brandon Pierce, PharmD and Mike Ellerbrook, PharmD, who actively manage thousands of patients in a busy anticoagulation clinic in Northern Illinois.

INCLUDES:

- Warfarin and Direct Acting Oral Anticoagulants (DOAC's)
- Anticoagulant Selection
- Anticoagulant Dosing
- Regimen Monitoring
- Identifying Risk Factors
- Perioperative Considerations
- Anticoagulant Reversal Agents

BASIC 12-LEAD EKG INTERPRETATION

Continuing Education Credits: 3.0 Contact Hours

Take the opportunity to learn how to confidently interpret EKG's from nurse practitioners who use this skill daily. This course covers all basic interpretation as well as a fair amount of the more complex diagnostic capabilities of the 12 Lead EKG. You need no experience with 12 lead EKG, but competence in interpretation of cardiac rhythms is a recommended prerequisite. Taught by Dr. John Russell, DNP, APRN, FNP-BC, CCRN, RNFA.

INCLUDES:

- Positioning of Leads
- Cardiac Anatomy
- Electrical Axis: Normal vs Abnormal
- Left Anterior Fascicular Block
- Left Posterior Fascicular Block
- Left Bundle Branch Block
- Right Bundle Branch Block
- Myocardial Infarction Types
- Underlying vascular tendencies for overlying EKG findings
- ST depressions, elevations, and q-wave abnormalities
- Pattern recognition for acute MI
- Inferior, Septal, Anterior, and Lateral MI
- Reciprocal changes commonly seen
- Dressler Syndrome/Pericarditis
- Hyper/hypocalcemia
- Hyper/hypokalemia
- Brugada Syndrome
- Long QT Syndromes
- Pre-excitation
- Pulmonary Embolism/S1Q3T3
- Other common diagnoses made from EKGs

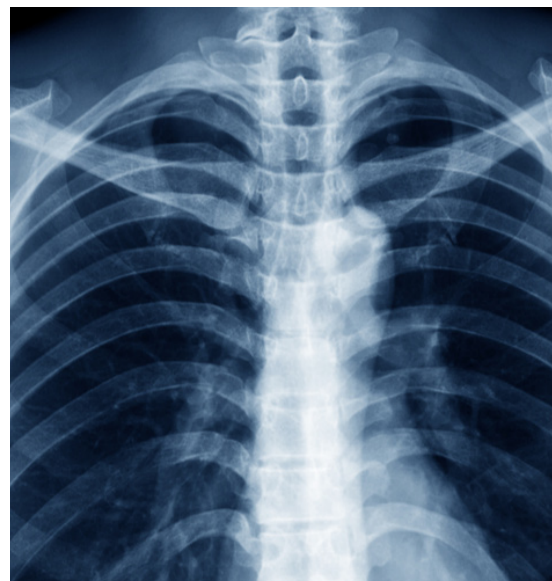
CHEST AND ABDOMINAL X-RAY INTERPRETATION

Continuing Education Credits: 3.0 Contact Hours

If you ever wanted to know what happens when you give a bored radiologist a can of Red Bull, this is what you get. There is so much to learn about with X-rays, but we don't stop there. We get down to the basics of why choose different medical imaging exams, their unique benefits and drawbacks, and collectively set you up to succeed in determining the best image to start with and based on findings, where to go from there. Taught by Dr. John Russell, DNP, APRN, FNP-BC, CCRN, RNFA.

INCLUDES:

- Basic Image Nomenclature and Orientation
- Portable vs Non-portable CXR
- Standardizing your interpretation process
- The Alphabet of the X-ray
- Cardiac Evaluation
- Aortic Evaluation
- Hilar Evaluation
- Thoracic Evaluation
- Pulmonary Evaluation
- Identifying Lobar Abnormalities
- Atelectasis
- Pneumonia
- Pneumothorax
- Tuberculosis
- Aspiration
- Nodules
- Foreign Bodies
- Pleural effusions and layering views
- Congestive Heart Failure
- Trauma
- Small and Large Bowel Exam
- Ileus vs Obstruction
- Volvulus
- Calculi (gall, renal, cystic)
- Aortic Aneurysm
- CT Scans
- Ultrasound
- MRI/MRA
- PET



DIABETES MANAGEMENT MADE EASY

Continuing Education Credits: 2.0 Contact Hours (including 2.0 pharm hrs)

There is so much to know about diabetes mellitus. It seems like every few days a new medication comes out and everyone is expected to be an expert at knowing how they all work and interact. It seems overwhelming, because it is. But it does not have to be anymore! Learn Diabetes Management from Dr. Tanya Munger, DNP, APRN, a Duke fellowship-trained endocrinology NP working in Northern Illinois.

INCLUDES:

- Diabetes Concepts and Management Paradigm
- Guideline Options for Practice
- Classes of Pharmacologic Antidiabetic Agents
- Insulin Management Options
- Glucose Monitoring
- Future Options for Diabetes Management

FLUID RESUSCITATION AND VASOPRESSORS

Continuing Education Credits: 2.0 Contact Hours (including 1.5 pharm hrs)

This course is designed to aid the healthcare provider or bedside nurse with the foundational concepts used in decision making regarding initiation of fluid resuscitation and initiation of vasoactive medications for the critically ill patient. Multiple vasopressors are discussed in pharmacologic detail. Clinical scenarios are used to help depict best practices using role-play and interactive demonstration. This course is taught by Dr. John Russell, DNP, APRN, FNP-BC, CCRN, RNFA.

COURSE OBJECTIVES:

- Definitions of Catecholamines
- Basic Concepts of Sympathetic Tone
- Mechanisms That Affect Basal Tone
- Resistance Vs Capacitance Vessels
- Signs of Inadequate Cellular Volume
- Determining Fluid or Vasopressor Approach
- Fluid Resuscitation Options and Guidelines
- Sympathetic and Parasympathetic Receptors
- Dopaminergic Receptors
- Tyrosine and Pharmacologic Mechanisms
- Choosing the Right Vasopressor for the Right Patient Scenario
- Dopamine
- Dobutamin
- Epinephrine
- Norepinephrine
- Neosynephrine
- Vasopressin
- Physiologic Barriers to Successful Titration
- Implications to Practice
- Considerations for Safe Use

HEART FAILURE MANAGEMENT MADE EASY

Continuing Education Credits: 2.0 Contact Hours (including 2.0 pharm hrs)

Take the opportunity to advance your skills in heart failure management with heart care nurse practitioner and educator Janet Lenz, APRN, NP-BC, CCRN, RCIS. Her vast array of clinical experience and management of a thriving heart failure clinic in Elgin, IL provides a unique opportunity to take your heart failure care know-how to the next level!

COURSE OBJECTIVES:

- Identification of types of heart failure
- HFpEF
- HFrEF
- Functional Classes
- Treatment Strategies
- Guidelines
- Pharmacologic Principles
- Societal Burden
- Practice and Research Gaps
- Next steps for practice Management



INTERVIEWING AND NEGOTIATING FOR NEW GRAD NURSE PRACTITIONERS

Continuing Education Credits: 2.0 Contact Hours

Get ready to learn all the inside scoop about the business side of working as a nurse practitioner. It's not quite like pulling the curtain on Oz, but it's pretty dope, and quite honestly, you'll wish you knew this information when walking into the interview as a NP the first time. Taught by Dr. John Russell, DNP, APRN, FNP-BC, CCRN, RNFA

COURSE OBJECTIVES:

- Finding the Right Job
- Networking for Healthcare Professionals
- When and to Whom to Apply
- The Curriculum Vitae and Cover Letter
- Expectations of the Interview
- Anticipate your Role Requirements
- Negotiating your Salary and Training
- Types of Employment
- Salary vs Productivity
- Independent vs Collaborative Practice
- Fringe Benefits and Bonuses
- Malpractice Insurance
- Knowing your Organizational Value
- Selling your Value to the Organization
- Contracts and Restrictive Covenants



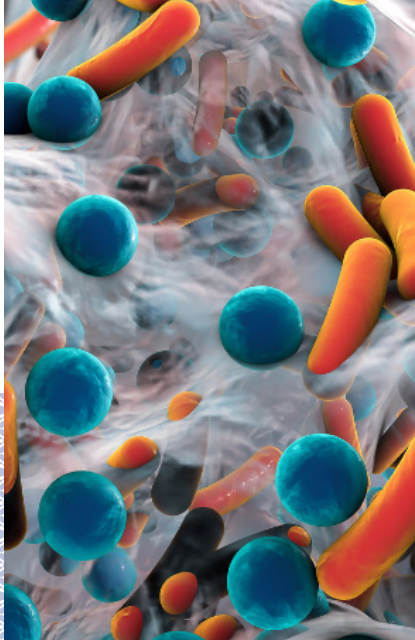
MANDATORY SEXUAL HARASSMENT TRAINING FOR ILLINOIS EMPLOYEES

Continuing Education Credits: 1.0 Contact Hour

Required by Illinois law for all employees annually, this course meets all guidelines set forth by HB75 as a qualified training in sexual harassment. May be presented in live or self-guided online format. Taught by Dr. John Russell, DNP, APRN, FNP-BC, CCRN, RNFA.

COURSE OBJECTIVES:

- Identification of common examples of sexual harassment
- Remedies available for victims of sexual harassment
- Responsibilities of employers to prevent, investigate, and correct sexual harassment



NEW AND EMERGING INFECTIOUS DISEASES

Continuing Education Credits: 2.0 Contact Hours (including 2.0 pharm hrs)

A disease over “there” is a threat EVERYWHERE. Learn how new and emerging infectious diseases affect your community, your patients and you and your family. Taught by Dr. Nancy Dirubbo, DNP, FNP, FAANP, CTH.

INCLUDES:

- Epidemiology of Infectious Diseases
- Anthropology of Infectious Diseases
- Political Science of Infectious Diseases
- Climatology of Infectious Diseases
- Public health of Infectious Diseases
- Pathophysiology of Infectious Diseases

ONLINE OPIOID PRESCRIPTION AND SUBSTANCE ABUSE EDUCATION CONFERENCE

Continuing Education Credits: 10.0 Contact Hours (including 10.0 pharm hrs)

Offered live biennially in April of even years, this course is designed to meet the renewal criteria immediately before Illinois APRN license renewals are due to satisfy required training directives. Includes 6 hours live recorded content plus 4 hours pre-recorded online content for a total of 10 hours. A conference like no other, this includes content from drug enforcement officials, nurse practitioners, pharmacists, police, lawyers, and key stakeholders in the at-risk communities in Illinois.



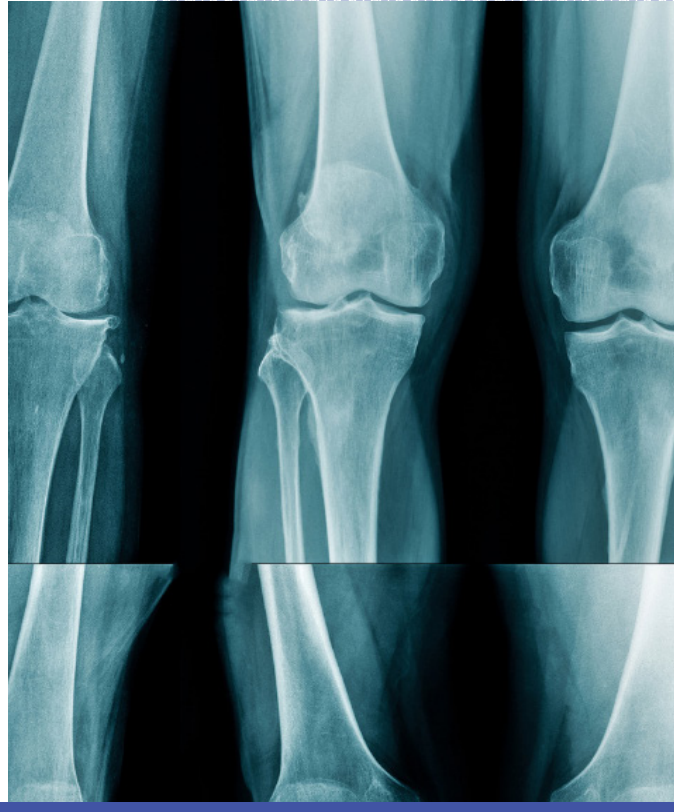
ORTHOPEDIC X-RAY INTERPRETATION

Continuing Education Credits: 2.0 Contact Hours

Take a trip and hold on as Dr. Mary McNamara, DNP, APRN, CNP provides a comprehensive yet articulate overview of the orthopedic x-ray. Whether it's in the trauma bay, immediate care, or family practice, Dr. McNamara will bring you up to speed on all the need to know tricks and tips to remember what can seem complicated, but really, is just a matter of taking a standardized approach to find the fracture!

INCLUDES:

- Orthopedic X-Ray Fundamentals
- Hand and Wrist
- Forearm and Elbow
- Shoulder
- Hip and Pelvis
- Knee and Leg
- Ankle and Foot
- Common Pitfalls



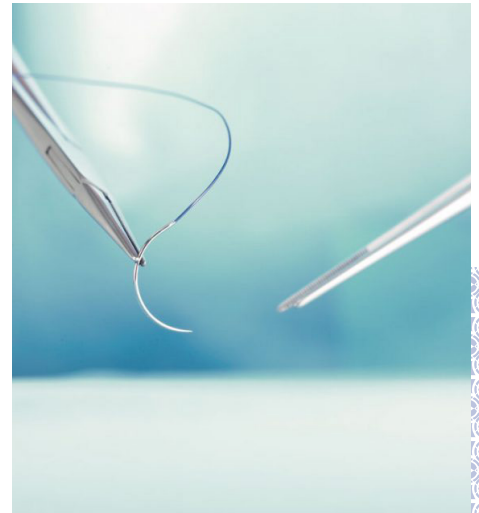
SUTURING TECHNIQUES 101

Continuing Education Credits: No Contact Hours (Free Course)

In this supplemental course, you will have access to a long-list of techniques taught at our Skills On Point, LLC suture training workshops by our cadre of nationally-recognized instructors, all of whom are first assistants in the OR! These are designed to give you some key notes on each technique, Do's and Don'ts, Gold Nuggets, and a video of each technique to offer you a way to practice the way you have been shown in our class! All this for free! Because we value your success and know you will only get good at this with meaningful, intentional practice. Taught by Dr. John Russell, DNP, APRN, FNP-BC, CCRN, RNFA

INCLUDES:

- Suturing Equipment 101
- Suturing Considerations
- Simple Interrupted Stitch
- Figure of Eight Stitch
- Buried Simple Interrupted Stitch
- Horizontal Mattress Stitch
- Vertical Mattress Stitch
- Simple Running Stitch
- Running Locking Stitch
- Running Horizontal Mattress
- Running Vertical Mattress
- Half-Buried Horizontal Mattress Stitch
- Keith Subcuticular Stitch
- Buried Subcuticular Stitch
- Two Hand Tie (Left- and Right-Handed)
- One Hand Tie (Left- and Right-Handed)
- Creating a Near and Far Strand
- Aberdeen Knot



THE ONLINE ICU SKILLS CONFERENCE

Continuing Education Credits: 8.0 Contact Hours

(including 2.0 pharm hrs)

The Online ICU Skills Conference is an annual event where like-minded nurses and nurse practitioners can gather and cultivate new knowledge while networking and enjoying great lectures. This course includes three of our most popular online courses with two bonus lectures you will not find anywhere else, taught by Kati Kleber, MSN, RN, CCRN-K, the owner of FreshRN.

INCLUDES:

- Fluid Resuscitation and Vasopressors - Dr. John Russell
- Basic 12 Lead EKG Interpretation - Dr. John Russell
- Chest and Abdominal X-Ray Interpretation - Dr. John Russell
- Emotional Pain - Kati and John Kleber
- Patient and Family Centered Communication in the ICU - Kati Kleber

WOUND MANAGEMENT MADE EASY

Continuing Education Credits: 2.0 Contact Hours

Take the opportunity to advance your skills in wound care with expert wound care clinician and educator Dr. Catherine Rogers, DNP, APRN. Her vast array of clinical experience and management of a thriving wound care clinic offer a unique opportunity to take your wound care know-how to the next level.

INCLUDES:

- Basic Wound Types
- Basic Wound Stages
- The History of Wound Management
- Modern Trends in Wound Management
- Topical Therapies for Advanced Wound Healing
- Hyperbaric Therapy
- Wound Vac Management and Therapy
- Acute Wound Dressings
- Chronic Wound Dressings





TRAVEL TO YOU

CONCIERGE PROGRAM OVERVIEW

Whether on-site university training, corporate training, or unique healthcare system privileging solutions, our dedicated team of over 30 expert instructors can reach out and support you anywhere in the United States, providing accredited content in a vast array, scalable to meet the need of your audience and desired depth of content covered. We can work with nearly any budget and provide solutions you might never have thought possible. Dozens of nurse practitioner programs, medical schools, and physician assistant programs have benefitted from the considerable resources of Skills On Point, and just like them, you can reach new areas of content you previously would have thought out of reach due to capital constraints, instructor availability, or for no other reason than we are invested in the expertise of teaching this content well and want to make your life easier!



ACUTE CARE

Designed to address the unique learning needs of hospital-based healthcare providers. Additional content available, the below represent most commonly requested.

COMMONLY REQUESTED CONTENT:

- Advanced Airway Management
- Arterial Puncture
- Arterial Line Insertion
- Basic to Advanced Suturing
- Central Line Insertion
- Chest Tube Thoracostomy
- Hand Tying
- Lumbar Puncture
- PICC Line Insertion
- Point of Care Ultrasound
- Thoracentesis
- Ultrasound Guided IV Insertion
- Ventilator Management

PRIMARY CARE

Designed to address the unique learning needs of procedure-heavy primary care and immediate care healthcare providers. Additional content available, the below represent most commonly requested.

COMMONLY REQUESTED CONTENT:

- | | |
|------------------------------|--------------------------------|
| • Commonly Requested Content | X-Ray Interpretation |
| • Basic to Advanced Suturing | • EKG Interpretation |
| • Casting | • Interviewing and Negotiation |
| • Chest and Abdominal | • Splinting |

OFFICE PROCEDURES PACKAGE:

- | | |
|---|--|
| • Cryotherapy | • Nail Trephination and Removal |
| • Biopsies: Shave, Punch, and Elliptical Excision | • Digital Blocks |
| • Local Anesthesia | • Abscess Incision/ Drainage and Packing |
| • Cerumen Impaction Removal | • Ring Removal and Cutting |
| • Fluorescein Stain and | |
| • Woods Lamps | |





NEONATAL CARE

Designed to address the unique learning needs of healthcare providers caring for neonates and infants. Additional content available, the below represent most commonly requested.

COMMONLY REQUESTED CONTENT:

- Arterial Access
- Intraosseous Access
- Intubation
- Lumbar Puncture
- PICC line Placement
- Suprapubic Catheter
- Umbilical Artery Cannulation
- Umbilical Vein Cannulation



DID YOU KNOW:

Our courses are located around the country, which means we can offer hands-on content for online universities which lack a physical classroom and still have a hands-on training experience conveniently near the student.

To learn more, check out

www.skillsnpoint.com



CONTINUING EDUCATION ACCREDITATION

MAIN ACCREDITATION OVERVIEW

We validate your training with skills, knowledge, and a formalized, evidence-based, peer-reviewed education. Included continuing education credit is granted whenever possible. We work closely with multiple key continuing education entities to ensure your educational experience includes proper accreditation. Skills On Point, LLC is approved as a provider of continuing nursing education by the Ohio Nurses Association, an accredited approver by the American Nurses Credentialing Center's Commission on Accreditation. (OBN-001-91)

RN, FNP, CNS, Prehospital EMS

American Nurses Credentialing Center (ANCC)

CRNA

American Association of Nurse Anesthetists (AANA)

MD, DO, CNM, PA

American Academy of Family Physicians (AAFP)

RT

American Association for Respiratory Care (AARC)



RECORD KEEPING AND COMPLIANCE

We value your investment in our programming. As with all licensed healthcare professionals, there is a potential your education may be audited for supporting documentation. Rest assured your information remains fully digitized, available for immediate recall. Through the use of our online continuing education portal, the user will have access to a password-protected encrypted site with perpetual access to training content and proof of completion with digital certificates and a timestamp for all live content. We have helped hundreds of auditees successfully turn a frustrating experience into an easy process, largely in part to our fantastic digital platform.

Although there is not a requirement to do so, we treat our clients as though we are governed by FERPA laws of an academic institution, since many institutions of higher learning use our content in part or in whole for their students. Access to your educational content remains strictly your business. We will never sell your information to anyone. We will not release your academic transcript to anyone other than the named account holder unless under subpoenaed or a direct administrator of your education has approved access. Plus, your records remain retrievable indefinitely in Amazon S3 storage.



DID YOU KNOW:

Evidence-based medicine changes daily. For this reason, all of our instructors must actively practice to be eligible to provide educational content. We are even more rigorous for our suturing instructors, who are required to be NIFA-trained first assistants to instruct for Skills On Point. Quality and consistency are in our DNA

To learn more, visit

www.skillsonpoint.com

FREQUENTLY ASKED QUESTIONS

Where are your courses held?

With the exception of our Basic Suture Training Workshop, which is held around the country, most pre-scheduled live courses are held at our Simulation Center at 6775 Fincham Dr. Suite #3, Rockford, IL 61108. Private courses are held wherever you are located, as we will travel to your group, organization, or school!

What do your courses cost?

Visit www.skillsonpoint.com for up to date pricing for live courses and <https://skills-on-point.teachable.com> for online continuing education courses. Concierge content is priced based on corporate rates based on desired programming and will drastically reduce the cost per attendee since we are not renting out space, paying for marketing, or food. The cheapest cost-per-participant will always be using our Concierge Program, and it gives you exactly what you want and nothing more.

What is the minimum amount of time I can contract your Concierge Content?

There is no minimum or maximum. Since travel is part of the contracted rate, having one- or two-days' worth of content to a larger group will reduce the per-capita expense. We work with groups of all sizes and durations from 4 hours upward.

Are your courses accredited?

Yes, and depending on the desired learner population, we will do a custom application based uniquely on your needs. The lead time for this varies, but 60 days before the event is recommended as a minimum for marketing content and continuing education credit applications. Please see the section above regarding accreditation and the organizations we utilize.

How many people do I need to have a private course?

It's entirely up to you. We have provided training for groups of one or two, and groups of one or two hundred. The best thing we can do is to have a conversation about your unique goals, and we can provide a free quote for our services with multiple levels of expense to meet your budget.

Where can I find out more about your courses?

Visit www.skillsonpoint.com for up to date information for live courses and <https://skills-on-point.teachable.com> for online continuing education courses. Use the Contact Us feature on our main site or reach us directly at john@skillsonpoint.com for concierge content requests.

I enrolled in a live course, now what?

Buckle up, get ready, and prepare to be amazed! You will be receiving an email after your purchase with instructions. It will include a link to your online CE portal for all live courses where your handouts, need-to-know information, and supplemental resources can be found. You will also fill out the post-course evaluation there after the course to generate your continuing education certificate. Make travel arrangements and consider reaching out to us to see if we have any block pricing on local hotels, based on the location of the course. We always make an effort to secure block pricing when possible at clean, reputable hotels.

Do I need to bring anything to my live course?

Just a smile, any handouts you want a copy of from your online continuing education portal files, and notify us of any issues that might delay arrival or cause a need to leave early so we can accommodate the content.

What if I have to cancel my class?

We understand that life happens. For all live content, we make considerable investments in your gear and instructors for the course from the moment you enroll. For this reason, live courses are not refundable, but can be applied to any other course we offer within the following 365 days. Online courses are eligible for 30-day no-questions-asked refund if you find the content is not what you were hoping to find. The only caveat is that once continuing education credit has been claimed, the course becomes non-refundable.

Do I get to keep the instruments from my suturing course?

The instruments for our comprehensive suture training workshop alone cost over \$700 per student. The investment we make into your experience with professional grade equipment is second to none. For this reason, we let you borrow our nice gear and avoid the expense added to each students' registration. That said, for suturing workshops hosted at our Simulation Center, you receive an instrument kit for practice as well as a suturing pad and suture to practice with at home.

Is there anything you don't teach?

Our goal is to provide a comprehensive source for healthcare professionals to receive expert-led, professional-grade, hands-on education for the key privileges required to work in modern healthcare. We make you this promise: We will never teach you something we do not actively perform in the actual patient care environment. That said, we are ever expanding our course list as we add instructors with expertise in new and exciting fields. If there is something you do not see listed that you wish we offered, reach out and you just might find we do, in fact, offer it!

Do you ever rent out your equipment to schools and businesses?

Sure do! Contact john@skillsonpoint.com for rates.

What is Mission Skills Inc?

Mission Skills Inc is a federal public charity under section 501c3. The purpose is to provide medical mission training, missions trip funding, and direct supply chain to people in need around the world. In short, we want to get the most impact during service trips and reach the lives of others with skills that translate during medical missions. We offer free suturing and procedural training for those who will serve in medical missions in the next 12 months. Learn more at www.missionskills.org.

How can I get involved?

Financial donations are always helpful, but what is trash to an institution may be a treasure in training for our organization. Please consider donating unused in-date or expired medical goods to Mission Skills, Inc and we will pay for the shipping of the supplies to our warehouse and provide to with a tax-deduction letter. All donations are fully tax deductible under federal law.

Do you have an affiliate program?

Yes, we do! If you are a big fan of Skills On Point, why not get paid to help us reach others with our awesome content?! We offer very competitive commissions for live and online content. Join the team by reaching out to us at john@skillsonpoint.com. We would much rather invest in you than in a search engine for ads. The less we have to spend on advertising, the less we have to charge for our courses, it's as simple as that.

STILL HAVE QUESTIONS?

We have answers!

Reach out at www.skillsonpoint.com



CONTRACTING PROCESS FOR CONCIERGE COURSES

STEP 1: GETTING TO KNOW YOU

It's pretty simple! Let's start with a conversation where we discuss your programming goals, budget, timing, and audience size. All potential customers will have a dedicated conversation with Dr. John Russell, the owner of Skills On Point where we listen to your unique needs.

STEP 2: PREPARING A WINNING STRATEGY

With this information paired with our experience with this content, we can suggest a reasonable game plan to accommodate your course in whatever timeline you can support. Most courses require several months of lead time to manage schedules and instructor availability. Since each of our instructors work in their field of expertise, we ask that no less than three months' notice prior to the desired event for scheduling.

STEP 3: WE PROPOSE A BOTTOM-LINE VICTORY

We will always offer you the best price up front in our proposal. We want you to experience the best training available and because we know you will walk away blown away with the value, our goal is to plan for repeat business. For this reason, nearly all of our Concierge Course clients are repeat customers. You save us marketing money, so we save you the expense as well.

STEP 4: LET'S MAKE THINGS OFFICIAL

If the deal works for us both, we proceed to contracting. Our legal team will send over a contract to review and sign electronically and then we proceed to invoicing. There is no wrong way to manage the course expense. Some clients choose to have us create a registration link to share for interested participants to enroll in individually. Others will contract for a bulk corporate enrollment. Either way, we can work with you to make it fit your organizational needs.

STEP 5: THAT'S IT! WE ARE SET!

All that's left is to sit back, kick your feet up, and enjoy the experience. We handle everything and you get to revel in the fact that your organization just hit it out of the park.

READY TO MOVE FORWARD?

Let's start by filling out the worksheet on the next page and then we can dream big together!

For more information about our Concierge Education program, contact Dr. John Russell directly at john@skillsonpoint.com or at 309-370-7582 to get your no obligation quote.



CONCIERGE COURSE LIST

ACUTE CARE:

- ☐ Advanced Airway Management
- ☐ Arterial Puncture
- ☐ Arterial Line Insertion
- ☐ Basic to Advanced Suturing
- ☐ Central Line Insertion
- ☐ Chest Tube Thoracostomy
- ☐ Hand Tying
- ☐ Lumbar Puncture
- ☐ PICC Line Insertion
- ☐ Point of Care Ultrasound
- ☐ Thoracentesis
- ☐ Ultrasound Guided IV Insertion
- ☐ Ventilator Management

PRIMARY CARE:

- ☐ Basic to Advanced Suturing
- ☐ Casting
- ☐ Chest and Abdominal X-Ray Interpretation
- ☐ EKG Interpretation
- ☐ Interviewing and Negotiation

- ☐ Splinting
- ☐ Cryotherapy
- ☐ Biopsies: Shave, Punch, and Elliptical Excision
- ☐ Local Anesthesia
- ☐ Cerumen Impaction Removal
- ☐ Fluorescein Stain and Woods Lamps
- ☐ Nail Trephination and Removal
- ☐ Digital Blocks
- ☐ Abscess Incision/Drainage and Packing
- ☐ Ring Removal and Cutting

NEONATAL:

- ☐ Arterial Access
- ☐ Intraosseous Access
- ☐ Intubation
- ☐ Lumbar Puncture
- ☐ PICC line Placement
- ☐ Suprapubic Catheter
- ☐ Umbilical Artery Cannulation
- ☐ Umbilical Vein Cannulation



COURSE SELECTION WORKSHEET

1) The course contents I find most essential to my students are (from list above):

<hr/>	<hr/>
<hr/>	<hr/>
<hr/>	<hr/>
<hr/>	<hr/>
<hr/>	<hr/>
<hr/>	<hr/>
<hr/>	<hr/>
<hr/>	<hr/>
<hr/>	<hr/>
<hr/>	<hr/>

2) Our ideal workshop duration would be:

- ☐ 1 DAY ☐ 2 DAYS ☐ 3 DAYS ☐ 4 DAYS

3) Our maximum budget would be: \$ _____ per student

4) Our ideal course timeline would be (choose multiple if 2x or 3x a year desired):

- ☐ JAN ☐ FEB ☐ MAR ☐ APR ☐ MAY ☐ JUN ☐ JUL ☐ AUG ☐ SEP ☐ OCT ☐ NOV ☐ DEC

5) Our ideal relationship would be (choose one):

- ☐ FULL SUPPORT: provide the entire programming, content, supplies, CE, and appropriate number of instructors (most common)
- ☐ INTEGRATED SUPPORT: portion of staff from your organization plus ours to reduce costs and present faculty and students in team-building relationship
- ☐ MINIMAL SUPPORT: gear only, instructor only, supplies only, or otherwise:

Notes:

<hr/>
<hr/>
<hr/>
<hr/>

A top-down view of surgical instruments including a pair of scissors, a pair of forceps, a scalpel, and a needle holder, all resting on a blue textured surface. The instruments are rendered in a monochromatic blue color scheme.

CONTACT US

SKILLS ON POINT

5472 Lambeth Dr
Rockford, IL 61107

john@skillsonpoint.com
309-370-7582



SKILLS ON POINT

WWW.SKILLSONPOINT.COM



SKILLS ON POINT